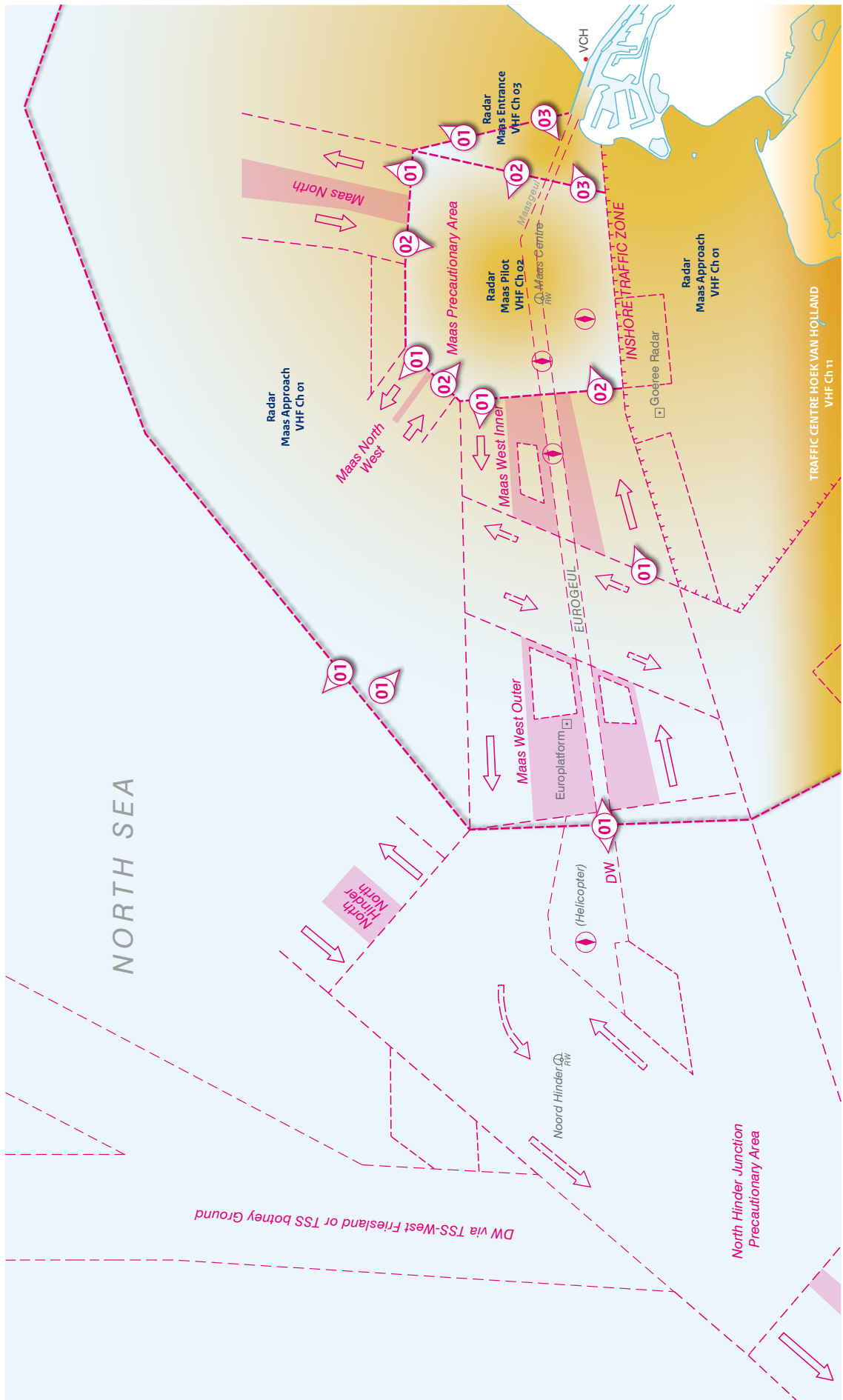


Behoort bij BaZ nr. 117/11 *Belongs to* NL NtM 117/11

Delete chart 9.4.4 and replace by:



Delete chapter 9.5.1.4 and replace by:

9.5.1.4

Pilot vessel cruising stations'

Boarding/unboarding station for vessels with draught up to 14.29m

- Embarkation of the pilot will take place by small or large tender 2 n miles west southwest of Maas Center Lt buoy, 1 pilot boarding;
- Disembarkation of the pilot will take place at the position of the MO Lt buoy;
- Vessels bound for Stellendam (Goereese Sluis) and Scheveningen may also embark the pilot here.

Boarding/unboarding station for vessels with draught between 14.30m and 17.39m

- Embarkation will take place by small or large tender, west of the E13 Lt buoy, in the Eurogeul, exact position will be advised via VTS, 1 pilot boarding;
- Disembarkation of the pilot will take place after passing of the MO Lt buoy.

Boarding/unboarding station for LNG-carriers

- Embarkation will take place by small or large tender in the Eurogeul between the E9 and E11 Lt buoys;
- Disembarkation of the pilot will take place near the MNW3-MW6 Lt buoy.

Unboarding station for vessels with a draught between 17.40m and 20.75m

- Disembarkation of the pilot will take place at the Euro Lt buoy.

How to recognize the pilot cutter, tenders, swath

- Pilot cutter: Located one mile south of the Maas Center Lt buoy: black vessel with yellow and white superstructure, with the word 'Pilot' in white letters on either side;
- Small tender: Yellow open tender surrounded by a black fender;
- Large tender: Yellow tender with a white superstructure, with the word 'Pilot' in black letters on either side;
- SWATH: Twin hull yellow tender with a white superstructure, with the word 'Pilot' in black letters on either side.

How to prepare the vessel for boarding the pilot

- By tender: Vessels with a freeboard of over 9.0m must provide an accommodation ladder in addition to the pilot ladder. Generally, pilots refuse to use mechanical pilot hoists or other constructions that do not comply with the above-mentioned regulations;
- By small tender: Pilot ladder 2 ft above the water, speed 4 kn;
- By large tender: Pilot ladder 6 ft above the water, speed 5-6 kn;
- By swath: Pilot ladder to be adjusted according instructions, speed 8-10 kn.

Add to chapter 9.6.1.1

9.6.1.1

Inbound LNG-carriers

- These vessels do not receive a Plan of Entry, and can enter at any time (except in case of tidal windows);
- LNG-carriers must embark the pilot in the Eurogeul between the E9 and E11 Lt buoys;
- LNG-carriers follow the TSS Maas West Outer and enter Eurogeul between E5 and E7 Lt buoy;
- Keep the pilot cutter on the lee side unless advised otherwise;
- When entering the outer breakwaters of Hoek van Holland tidal cross stream should be reckoned with. During maximum tidal stream a minimum speed of 10 kn is advised in order to make course corrections.

Delete chart 9.6.1 and replace by:

9.6.1 **Zeegat van Hoek van Holland approach**

