

Behoort bij BaZ nr. 116/11 *Belongs to NL NtM 116/11*

BaZ nr. 116/11 vervangt BaZ nr. 503/10 *NL NtM 116/11 replaces NL NtM 503/10*

Add section 14.4.1.5:

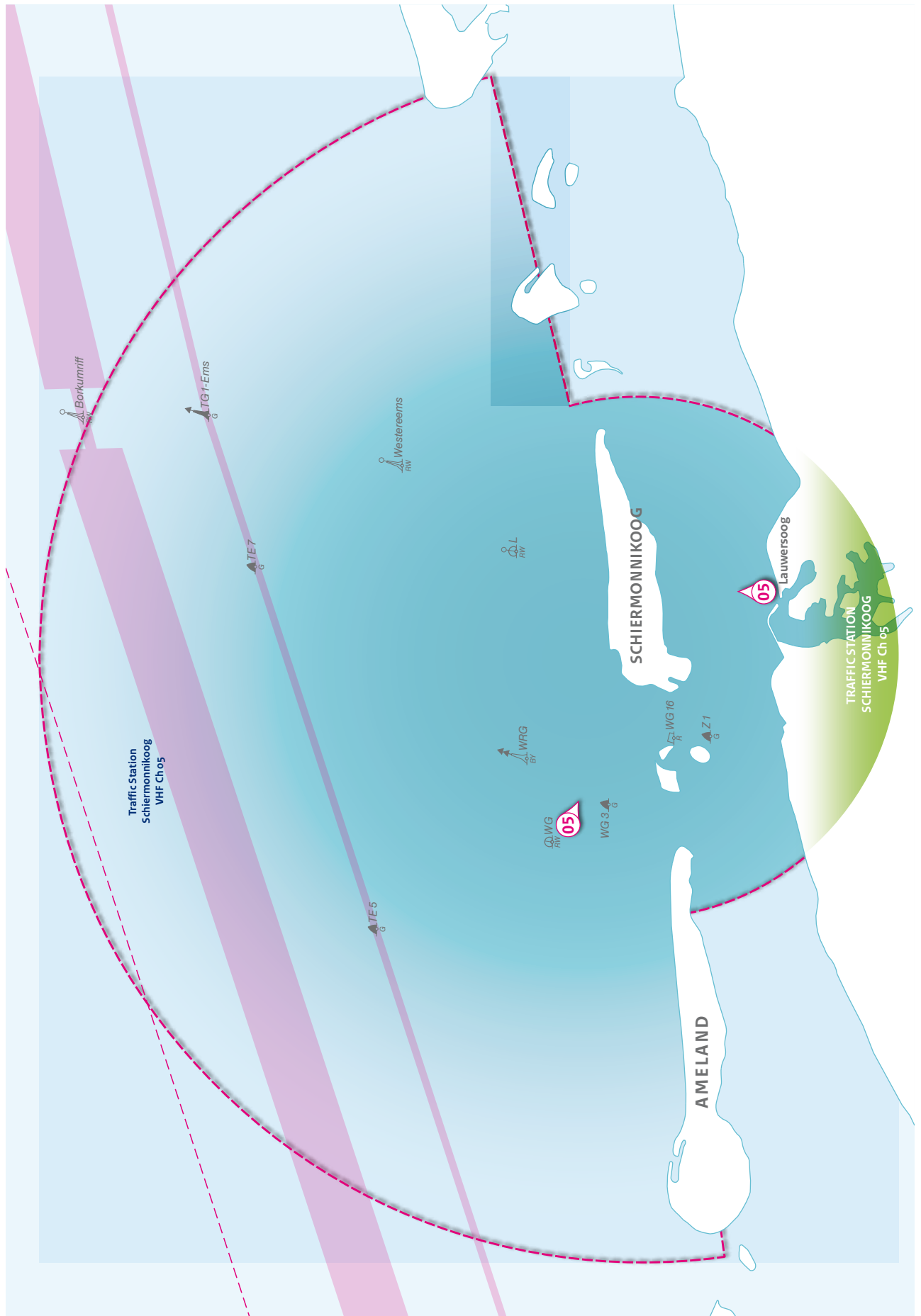
14.4.1.5 **ETA**

Who	<ul style="list-style-type: none">■ All vessels carrying dangerous cargo;■ Special transports;■ Vessels restricted in their manoeuvrability.
To	Centrale Meldpost Waddenzee Telephone: +31 (0)562 443 100 Fax: +31 (0)562 442 355 VHF Ch 04
What	Name vessel - call sign - nationality- type of vessel and GT - loa - width - draught - Lloyds number - harbour of destination - ETA - sailing plan - cargo specifications - confirmation 'Bill of loading' on board - number of crew/passengers on board.
When	<ul style="list-style-type: none">■ ETA - 24h entering Waddenzee;■ Unexpected circumstances within VHF - range.

Behoort bij BaZ nr. 116/11 *Belongs to NL NtM 116/11*

BaZ nr. 116/11 vervangt BaZ nr. 503/10 *NL NtM 116/11 replaces NL NtM 503/10*

Delete chapter 14.4.4 and replace by:



Behoort bij BaZ nr. 116/11 *Belongs to NL NtM 116/11*

BaZ nr. 116/11 vervangt BaZ nr. 503/10 *NL NtM 116/11 replaces NL NtM 503/10*

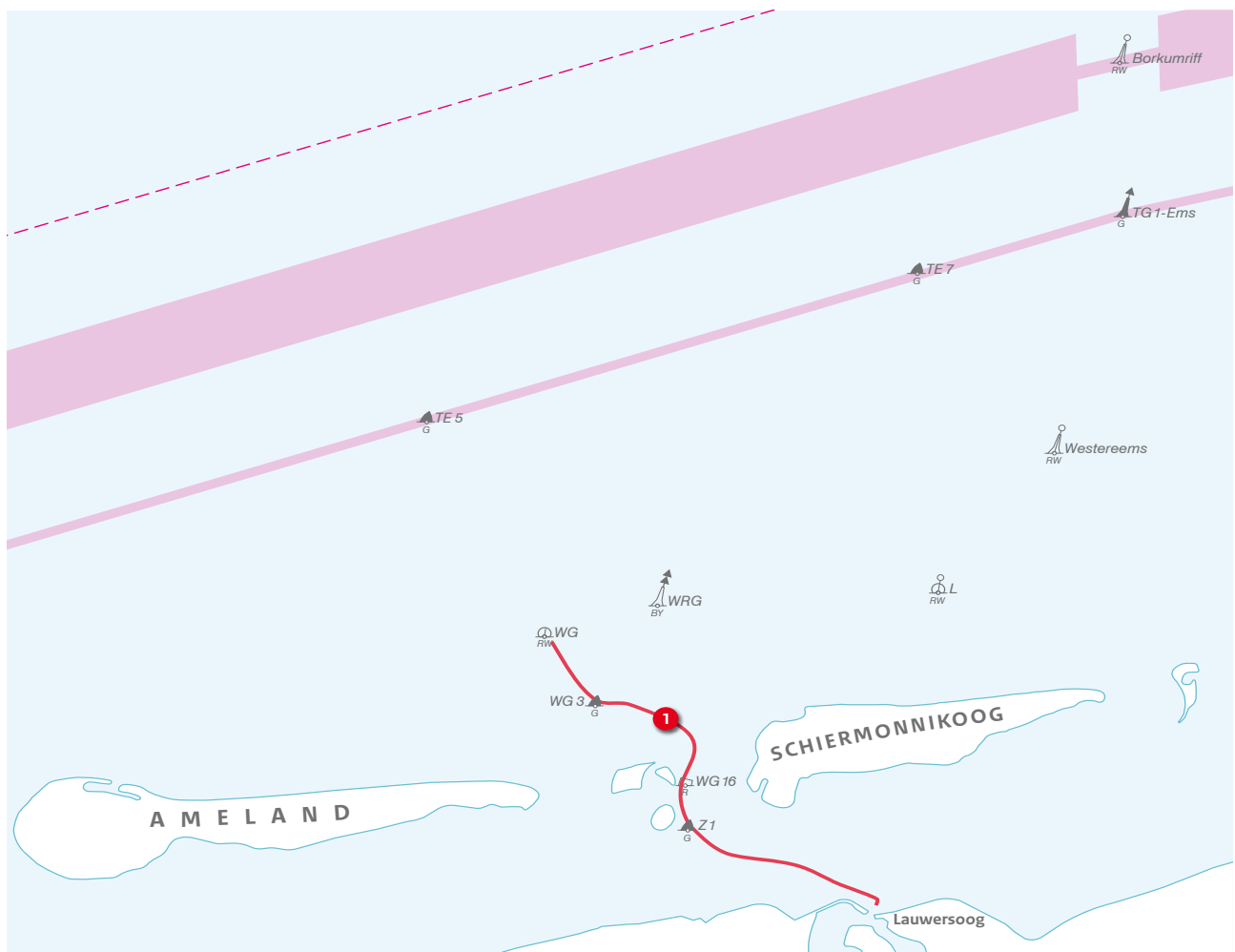
VTS-reports - All vessels except vessels < 20m (not carrying dangerous cargo)

VHF Ch	Location	Message	To
05	<ul style="list-style-type: none"> ■ On time before entering Waddenzee; ■ When leaving/entering a harbour or secondary fairway; ■ When turning in or crossing the fairway; ■ When dropping or heaving anchor. 	<ul style="list-style-type: none"> ■ Name vessel and call sign; ■ Position; ■ Destination; ■ Draught; ■ Cargo; ■ Number of crew/passengers. 	Traffic Station Schiermonnikoog

Other communication

VHF Ch	Location	Service	Call sign
05	Lighthouse Schiermonnikoog	<p>Traffic Station Schiermonnikoog provides radar information on request. This means that the vessel's position relative to bouys or other recognisable points is passed.</p> <p>No information is provided about shipping in the vicinity. Navigational information regarding the eastern part of the Waddenzee is transmitted at the following fixed times (Lt): 00h30, 02h30, 04h30, 06h30, 08h30, 10h30, 12h30, 14h30, 16h30, 18h30, 20h30 and 22h30.</p>	Traffic Station Schiermonnikoog
04		The Central Reporting Station Waddenzee is responsible for co-ordinating the relevant maritime authorities with regard to all incidents within the Waddenzee area.	Central Reporting Station Waddenzee
11	Lauwersoog Harbour	The station is occupied: Mon. 0000 - 1700; Tue. and Wed. from 0800 - 0700; Thu. and Sat. from 0700 - 1500 (Lt)	Port Authority Lauwersoog

Delete chapter 14.6.1 and replace by:



Delete chapter 14.6.1.2 and replace by:

14.6.1.2

Note

Over Gronden van het Plaatgat, Wierumer Gronden and the buoyed channel Westgat ground seas and/or heavy seas can arise during winds > 7 Bft. from WNW-ly to NEly directions especially when the wind runs against the falling tide (stream setting NW-N). For small vessels it is advised against to navigate the channel during above mentioned circumstances. Sailing Westgat can best be done via Lt buoy 'WG' from 2h before HW Lauwersoog to HW Lauwersoog (HW at the Fairway Buoys = approximately HW Lauwersoog - oohzom). The Traffic Station at Schiermonnikoog will inform shipping about wind and sea state on request. See section 14.4.4 'Vessel traffic services'.

Delete chapter 14.6.1.3

Delete chapter 14.7.2: Tidal streams table 'Plaatgat' (53° 30.1' N 06° 07.3' E)