



Koninklijke Marine

BaZ | 2011

11 | BAZ 116-125

Berichten aan Zeevarenden
Netherlands Notice to Mariners



Netherlands Hydrographic Office			
BaZ	038/11	1/1	NL Chart Weekly
Previous BaZ	580/10		

136^e jaargang 17-3-2011

Dienst der Hydrografie

AGENTEN VOOR VERKOOP VAN NEDERLANDSE HYDROGRAFISCHE PUBLICATIES

(Chart agents and supply of Netherlands Notices to Mariners (BaZ))

De Berichten aan Zeevarenden (BaZ) verschijnen wekelijks en zijn te verkrijgen:

- als printversie (PDF) via internet www.hydro.nl
- via de Database www.hydro.nl/pgs/baz_main_nl.htm
- als boekje (tegen betaling) bij een aantal A-agenten.

De catalogus is ook gepubliceerd op www.hydro.nl.

A-agenten: (bijgewerkte kaarten)

- Amsterdam: **Datema Amsterdam**, Prins Hendrikkade 176/50, 1011 TC Amsterdam,
Tel +31 (0)20 - 4277727; Fax. +31 (0)20 - 4279566;
Internetpagina: www.datema-Amsterdam.nl ; e-mail: datema-amsterdam@planet.nl
- Amsterdam: **L.J. Harri BV**, Prins Hendrikkade 94/95 "Schreierstoren", 1012 AE Amsterdam,
Tel. +31 (0)20 - 6248052; Fax. +31 (0)20 - 6258086;
Internetpagina: www.ljharri.nl ; e-mail: ljharri@xs4all.nl
- Delfzijl: **Datema Delfzijl BV**, Zeesluizen 8, 9936 HX Delfzijl,
Tel. +31 (0)596 - 635252; Fax. +31 (0)596 - 615245;
Internetpagina: www.datema.nl ; e-mail: delfzijl@datema.nl
Davids Maritime, Landstraat 3, 9934 BG Delfzijl,
Tel: +31 (0)596 - 634870; Fax: +31 (0) 596 - 634827
Internetpagina: www.davids-maritime.nl ; e-mail: info@davids-maritime.nl
- Rotterdam **Kelvin Hughes Netherlands BV**, Klompenmakerstraat 64, 3194 DE Hoogvliet,
Tel. +31 (0)10 - 4167622; Fax. +31 (0)10 - 4167218;
Internetpagina: www.kelvinhughes.com ; e-mail: nlsales@kelvinhughes.nl
Datema Rotterdam, Galvanistraat 148, 3029 AD Rotterdam,
Tel. +31 (0)10 - 4366188; Fax. +31 (0)10 - 4365511 ; e-mail: rotterdam@datema.nl
Harri Trading BV, Van Weerden Poelmanweg 4, 3088 EB Rotterdam,
Tel. +31 (0)10 - 4290333; Fax. +31 (0)10 - 4282324;
Internetpagina: www.harritrading.nl ; e-mail: info@harritrading.nl
- Antwerpen: **Bogerd/Martin & Co.**, Oude Leeuwenrui 37, 2000 Antwerpen,
Tel. +32 (0)32134170; Fax. +32 (0)32326167;
Internetpagina: www.martin.be ; e-mail: sales@martin.be
- Hamburg: **HanseNautic GmbH**, Herrengraben 31, D-20459 Hamburg,
Tel. +49 (0)403748420; Fax. +49 (0)4037484242;
Internetpagina: www.hansenautic.de ; e-mail: info@hansenautic.de
- Bremen: **"Seekarte" Kpt. A. Dammeyer**, Korffsdeich 3, D-28217 Bremen,
Tel. +49 (0)421395051; Fax. +49 (0)4213962235;
Internetpagina: www.seekarten.com e-mail: seekarte@seekarte.de
- London: **Kelvin Hughes**, New North Road, Hainault, Ilford, Essex IG6 2UR
Tel. +44 (0)20 8502 6887; Fax.+44 (0)20 8559 8535;
e-mail: cams@kelvinhughes.co.uk

B-agenten:

- Den Haag: **Koninklijke Nederlandse Toeristenbond ANWB**, Wassenaarseweg 220, 2596 EC Den Haag, Tel. +31 (0)70 - 3147147; en bijkantoren; *Internetpagina : www.anwb.nl*
- Scheveningen: **Vrolijk Watersport Scheveningen**, Treilerweg 65, 2583 DB Scheveningen,
Tel: +31 (0) 70 - 4168282, Fax: +31 (0) 70 - 3060497,
internetpagina: www.vrolijk.nl ; e-mail : winkel@vrolijk.nl ;
- Antwerpen: **Firma U.V.O.**, Napoleonskaai 3-7, 2000 Antwerpen,
Tel. +32 - (0)32331330; Fax +32- (0)32330551;
Internetpagina: www.uvoyachtinting.be ; e-mail: uvoyachting@scarlet.be
- St Ives: **Imray Laurie Norie & Wilson Ltd**, Wych House, The Broadway, St Ives, Huntingdon, Cambridgeshire PE17 4BT, Tel. +44 - (0)1480 - 462114; Fax. +44 - (0)1480 - 496109
Internetpagina: www.imray.com ; e-mail: ilnw@imray.com
- Bielefeld: **Delius Klasing Verlag GMBH**, Kammerratsheide 30a, Postfach 101671, D-33609 Bielefeld, Tel: +49 (0) 521 - 559000; Fax. +49 (0)521 - 559113;
internetpagina: www.delius-klasing.de ; e-mail: info@delius-klasing.de

C-agent:

- St. Maarten: **Budget Marine**, P.O.Box 434; Philipsburg, Tel. 599 - 5443134; Fax 599 - 5444409

Voorwoord

- Overeenkomstig SOLAS-bepalingen dienen de officieel uitgegeven zeekaarten en boekwerken met Berichten aan Zeevarenden (BaZ) bijgewerkt te worden. Algemene richtlijnen voor het gebruik van BaZ staan beschreven in de jaarlijkse BaZ 3 in weekeditie 1, British Admiralty NP 100 (Mariner's Handbook) en NP 294 (How to correct your charts the Admiralty way).
- Berichten aan Zeevarenden hebben alleen betrekking op Nederlandse kaarten en hydrografische publicaties. Berichten van toepassing op buitenlands gebied op Nederlandse kaarten worden overgenomen van de hydrografische dienst van het betreffende land. Berichten bevatten algemene mededelingen, correcties op kaarten of boeken, voorlopige (P) of tijdelijke (T) berichten of een overzicht.
- Gegevens die ten grondslag liggen aan berichten worden waar nodig kartografisch gegeneraliseerd. De berichten zijn alleen bedoeld om de publicaties genoemd in het bericht te kunnen corrigeren.
- Posities worden vermeld in het referentiestelsel (geodetisch datum) dat overeenkomt met dat van de betrokken kaart. Het referentiestelsel is altijd op de kaart vermeld. Onjuiste interpretatie van de referentiestelsels kan leiden tot positiefouten van enkele honderden meters.
- Richtingen, peilingen, geleidelijnen en lichtsectoren worden rechtwijzend gegeven, in graden, gerekend vanuit zee.
- Diepten en hoogten worden gegeven in dezelfde eenheid en herleid tot hetzelfde referentievlak als gebruikt in de betrokken kaart.
- Nadruk van de berichten is toegestaan mits volledig, ongewijzigd en met bronvermelding.
- De Chef der Hydrografie verzoekt u dringend vermoede of nieuwe gevaren en onjuistheden in publicaties te melden.

De Chef der Hydrografie

Van der Burchlaan 31 (gebouw 32), Postbus 90701, 2509 LS Den Haag,
tel. +31 (0)70 3162817, fax. +31 (0)70 3162843, internetpagina: www.hydro.nl ; e-mail ; baz@hydro.nl

Preface

- *In accordance with SOLAS-regulations official published nautical charts and books have to be kept*
- *corrected by means of Notices to Mariners (NL NM). General guidelines for the use of NL NM are described in the annual NL NM 3 in weekly edition 1, British Admiralty NP 100 (The Mariner's Handbook) and NP 294 (How to keep your Admiralty charts up-to-date).*
- *Netherlands Notices to Mariners are only applicable for Netherlands nautical charts and hydrographic publications. Notices concerning foreign waters on Netherlands charts are adopted from the hydrographic service of that specific country. Notices contain general announcements, corrections for charts or books, preliminary (P) or temporary (T) notices or a summary.*
- *Data on which the notices are based are if necessary cartographically generalized. The notices are meant only to correct the publications that are stated in the notice.*
- *Positions are given in the reference system (geodetic datum) that corresponds with that of the relevant chart. The reference system is always printed on the chart. Incorrect interpretation of the reference system can lead to errors in the position of several hundreds of metres.*
- *Directions, bearings, leading lines and light sectors are true, in degrees, reckoned from seawards.*
- *Depths and heights are given in the same unit and are reduced to the same reference level as used in the relevant chart.*
- *Reprinting of the notices is allowed if complete, unchanged and with acknowledgement.*
- *The Hydrographer of the Netherlands Navy urges you strongly to report suspected or new dangers and errors in publications.*

Hydrographer of the Netherlands Navy

Van der Burchlaan 31, P.O. Box 90701, 2509 LS Den Haag, tel. +31 (0)70 3162817 ;
fax. +31 (0)70 3162843, Internetpage: www.hydro.nl ; e-mail ; baz@hydro.nl

Inhoudsopgave

Kruisverwijzing / <i>Cross reference</i>	4
Algemene berichten / <i>General notices</i>	5
Berichten Zeekaarten / <i>Notices Nautical charts</i>	5
Berichten 1800 serie kaarten / <i>Notices 1800 series charts</i>	8
Berichten Hydrografische publicaties / <i>Notices Hydrographic publications</i>	9
Overzicht booreilanden / <i>Rig list</i>	11
Meetinstrumenten lijst / <i>Measuring instruments list</i>	12

Kruisverwijzing / *Cross reference*

In de hoofdstukken Zeekaarten, 1800 serie kaarten en Hydrografische publicaties van dit document zijn de Berichten aan Zeevarenden gerangschikt op BaZ-nummer. Onderstaand overzicht toont deze berichten per kaartnummer en het nummer van de hydrografische publicatie.

In the Nautical charts, 1800 series charts and Hydrographic publications sections of this document the Notices to Mariners are sorted by NL NM-number. The overview below displays these notices sorted by chart and hydrographic publication number.

Zeekaarten / *Nautical Charts*

Kaart / <i>Chart</i>	BaZ / <i>NL NM</i>		
122	*117/11		
124	*123(T)/11	*122/11	
125	*123(T)/11	*122/11	
126	*121(T)/11		
1630	*117/11		
1631	*121(T)/11		
2020	*119/11		
2110	*119/11		

1800 serie kaarten / *1800 series charts*

Kaart / <i>Chart</i>	BaZ / <i>NL NM</i>		
1801	*123(T)/11	*122/11	*124(T)/11
1810	*125(T)/11		

Hydrografische publicaties/ *Hydrographic publications*



Publication	BaZ / <i>NL NM</i>			
HP 1	*118/11	*116/11	*120/11	*117/11

Algemene berichten / General notices

NIL




Berichten Zeekaarten / Notices Nautical charts

*117/11 NOORDZEE. MAASWEST TSS.

Kaart / Chart	Int. / Int.	Vorig BaZ / Prev. NL NM	Uitgave / Edition	Itemnr. / Itemno.
122	1472	55/11	Oct 2010	2, 3, 4
1630	1416	90/11	Dec 2010	1, 2, 3, 4
<u>1</u> Aanbrengen Insert	Text: red	Draught 17.40 - 22.55 m	op / at	51-59,00 N 002-58,00 E
<u>2</u> Aanbrengen Insert		LNG Carriers	op / at	52-00,50 N 003-37,00 E
				
<u>3</u> Aanbrengen Insert		Draught 14.30 - 17.39 m	op / at	52-01,00 N 003-44,00 E
				
<u>4</u> Aanbrengen Insert	Text: red	Draught up to 14.29 m	op / at	51-59,10 N 003-47,10 E

Bron / Source: Havenbedrijf Rotterdam 188/10; BDS 2290 & 2404/10.

*119/11 WEST INDIE. ST. EUSTATIUS.

Kaart / Chart	Int. / Int.	Vorig BaZ / Prev. NL NM	Uitgave / Edition	Itemnr. / Itemno.
2020	n.a.	575/10	Nov 2007	3, 4
2110	n.a.	575/10	Mar 1997	1, 2
<u>1</u> Schrappen Delete		Wk	van / from	17-27,58 N 062-54,60 W
				
<u>2</u> Schrappen Delete		Q.W	van / from	17-27,58 N 062-54,60 W
				
<u>3</u> Schrappen Delete		Wk	van / from	17-27,58 N 062-54,60 W
				

4 Schrappen
Delete

Q+LFI

van / from 17-27,58 N 062-54,60 W



Bron / Source: Dienst der Hydrografie; BDS 467/11.

***121(T)/11** NOORDZEE. OFF TEXEL TSS.

Kaart / Chart	Int. / Int.	Itemnr. / Itemno.
126	1468	1
1631	1418	1

1 Vanaf eind maart / begin april 2011 zal het wrak van het ms "Vinca Gorthon" worden geborgen. Het wrak van de "Vinca Gorthon" ligt in positie 52-45,90 N 004-12,70 E net ten zuiden van de ingang van de noord gaande verkeersbaan van het "Verkeersscheidingsstelsels Nabij Texel".

Op de bergingslocatie zullen twee bakken vertuid ten anker worden gepositioneerd, één aan elke kant van het wrak. Daarnaast zal ander varend bergingsmateriaal worden ingezet, waaronder survey- en duikvaartuigen, alsmede sleepboten en pontons.

Tijdens de bergingswerkzaamheden zal een bewakingschip op locatie aanwezig zijn ten behoeve van informatie aan de scheepvaart die de bergingslocatie nadert en passeert. Scheepvaart wordt in verband met het wijd uitgezette ankerpatroon dringend verzocht de bergingslocatie ruim (minimaal 1 nautische mijl) te passeren.

As of the end of March / beginning of April 2011 the wreck of the mv "Vinca Gorthon" will be salvaged. The wreck of the "Vinca Gorthon" is situated in position 52-45,90 N 004-12,70 E just south of the entrance of the northbound shipping lane of the "Traffic Separation Scheme Off Texel".

Two barges will be established on location, one on each side of the wreck. Furthermore several salvage units will be involved in the salvage operations such as survey- and divingsupport vessels, as well as tugs and barges.

During the salvage operations a guard vessel will be present on location to inform shipping approaching and passing the salvage area. Because of the anchorspread shipping is urgently requested to give a wide berth of at least one nautical mile.

Bron / Source: Kustwacht; BDS 196/11.

***122/11** NOORDZEE. BUITENHAVEN. IJMUIDEN.

Kaart / Chart	Int. / Int.	Vorig BaZ / Prev. NL NM	Uitgave / Edition	Itemnr. / Itemno.
124.A	1471	70/11	Aug 2010	1, 2
125.A	1469	45/11	Aug 2007	1, 2

1 Schrappen
Delete

KOM A

van / from 52-27,88 N 004-34,19 E



2 Schrappen
Delete

KOM B

van / from 52-27,88 N 004-34,32 E



Bron / Source: Berna/DNZ/Vlissingen 12/11; BDS 450/11.

***123(T)/11** NOORDZEE. BUITENHAVEN. IJMUIDEN.

Kaart / Chart	Int. / Int.	Itemnr. / Itemno.
124.A	1471	1
125.A	1469	1

- 1** In verband met baggerwerkzaamheden is de betoning als volgt aangepast; verlegd van positie:
- 52-27,88 N 004-34,07 E naar positie 52-27,87 N 004-033,95 E, groene-rood bolvormige lichtboei met spits topteken, Q.G, NK 1-ZK 2.

Opgenomen uit positie:

- 52-27,85 N 004-34,11 E, rode lichtboei, Iso.R.4s, ZK 4.

As result of dredging operations, the buoyage is changed as follows;

Moved from position:

- 52-27,88 N 004-34,07 E to position 52-27,87 N 004-033,95 E, green-red spherical light buoy with conical top-mark, Q.G, NK 1-ZK 2.*

Removed from position:

- 52-27,85 N 004-34,11 E, red can light buoy, Iso.R4s, ZK 4.*

Bron / Source: Berna/DNZ/Vlissingen 12/11; BDS 450/11.

Berichten 1800 serie kaarten / Notices 1800 series charts

*122/11 NOORDZEE. BUITENHAVEN. IJMUIDEN.

Kaart / Chart	Int. / Int.	Vorig BaZ / Prev. NL NM	Uitgave / Edition	Itemnr. / Itemno.
1801.8A	n.a.	107/11	Apr 2010	3, 4

3 Schrappen
Delete

van / from 52-27,88 N 004-34,19 E



4 Schrappen
Delete

van / from 52-27,88 N 004-34,32 E



Bron / Source: Berna/DNZ/Vlissingen 12/11; BDS 450/11.

*123(T)/11 NOORDZEE. BUITENHAVEN. IJMUIDEN.

Kaart / Chart	Int. / Int.	Itemnr. / Itemno.
1801.8A	n.a.	1

1 In verband met baggerwerkzaamheden is de betoning als volgt aangepast;
verlegd van positie:

a. 52-27,88 N 004-34,07 E naar positie 52-27,87 N 004-033,95 E, groene-rood bolvormige lichtboei met spits topteken, Q.G, NK 1-ZK 2.

Opgenomen uit positie:

b. 52-27,85 N 004-34,11 E, rode lichtboei, Iso.R.4s, ZK 4.

As result of dredging operations, the buoyage is changed as follows;

Moved from position:

a. 52-27,88 N 004-34,07 E to position 52-27,87 N 004-033,95 E, green-red spherical light buoy with conical top-mark, Q.G, NK 1-ZK 2.

Removed from position:

b. 52-27,85 N 004-34,11 E, red can light buoy, Iso.R4s, ZK 4.

Bron / Source: Berna/DNZ/Vlissingen 12/11; BDS 450/11.

***124(T)/11** IJSSELMEER. URK.

Kaart / Chart	Int. / Int.	Itemnr. / Itemno.
1801.4	n.a.	1

1 Tussen Boei EZ 1 en RH A is tijdelijke betonning uitgelegd, ter markering van een werkgebied.

Het werkgebied bevindt zich tussen de posities:

a. 52-39,80 N 005-32,77 E, gele stompe ton met A1 verbodsbord en licht Iso.2s:

b. 52-40,77 N 005-33,27 E, gele stompe ton met A1 verbodsbord en licht Iso.2s.

Temporary buoys have been laid between buoy EZ 1 and RH A to mark a working area.

The working area lies between positions:

a. 52-39,80 N 005-32,77 E, yellow can light buoy with prohibited top-mark, Iso.Y.2s;

b. 52-40,77 N 005-33,27 E, yellow can light buoy with prohibited top-mark, Iso.Y.2s.

Bron / Source: RDIJ 48/11; BDS 478/11.

***125(T)/11** IJSSELMEER. MAKKUMERDIEP.

Kaart / Chart	Int. / Int.	Itemnr. / Itemno.
1810.4H	n.a.	1

1 Vanwege een verondieping aan de groene tonnenlijn tussen de MA-5 en MA-7 wordt de scheepvaart verzocht de rode tonnenlijn van het vaarwater aan te houden.

Due to a reduced depth in the green buoyage line between buoys MA-5 and MA-7 shipping is requested to sail the red buoyage line of the fairway.

Bron / Source: RDIJ 46/11; BDS 475/11.

Berichten Hydrografische publicaties / Notices Hydrographic publications

***116/11** WADDENZEE. SCHIERMONNIKOOG. PLAATGAT.

Publicatie / Publication	Vorig BaZ / prev. NL NM	Itemnr. / Itemno.
HP 1 The Netherlands Coast Pilot	52/11	1

1 Aanbrengen van bijgevoegd verbeterblad.
(attentie! gebruik de juiste printer instellingen).

Insert the accompanying block.

(attention! use the proper printer settings).

1 in hoofdstuk 14.4.1.5, 14.4.4, 14.6.1, 14.6.1.2, 14.6.1.3, 14.7.2. / in chapter 14.4.1.5, 14.4.4, 14.6.1, 14.6.1.2, 14.6.1.3, 14.7.2.

Bron / Source: Berna/WSW 28 & 29/11; BDS 299 & 300/11.

***117/11** NOORDZEE. MAASWEST TSS.

Publicatie / Publication	Vorig BaZ / prev. NL NM	Itemnr. / Itemno.
HP 1 The Netherlands Coast Pilot	116/11	5

- 5** Aanbrengen van bijgevoegde verbeterbladen.
(attentie!! gebruik de juiste printer instellingen).

*Insert the accompanying blocks.
(attention!! use the proper printer settings).*

5 in hoofdstuk 9.4.4, 9.5.1.4 & 9.6.1 / in chapter 9.4.4, 9.5.1.4 & 9.6.1

Bron / Source: Havenbedrijf Rotterdam 188/10; BDS 2290 & 2404/10.

***118/11** NOORDZEE. HAVEN VAN SCHEVENINGEN.

Publicatie / Publication	Vorig BaZ / prev. NL NM	Itemnr. / Itemno.
HP 1 The Netherlands Coast Pilot	117/11	1

- 1** Aanbrengen van bijgevoegd verbeterblad.
(attentie! gebruik de juiste printer instellingen).

*Insert the accompanying block.
(attention! use the proper printer settings).*

1 in hoofdstuk 10.4.2, 10.6.1, 10.6.2, 10.9.2, 10.10.1. / in chapter 10.4.2, 10.6.1, 10.6.2, 10.9.2, 10.10.1.

Bron / Source: Dienst der Hydrografie; BDS 382/11.

***120/11** CORRECTIES HP 1 - THE NETHERLANDS COAST PILOT.

Publicatie / Publication	Vorig BaZ / prev. NL NM	Itemnr. / Itemno.
HP 1 The Netherlands Coast Pilot	118/11	1

- 1** Aanbrengen van bijgevoegd verbeterblad.
(attentie! gebruik de juiste printer instellingen)

*Insert the accompanying block.
(attention! use the proper printer settings)*

1 in hoofdstuk 2.1.5 / in chapter 2.1.5

Bron / Source: Kustwacht; BDS 516/11.

Overzicht booreilanden / Rig list

17-3-2011

Overzicht van booreilanden werkzaam in de Noordzee. De opgegeven posities zijn in WGS 84. Geplaatste booreilanden hebben een veiligheidszone van 500m (0,27 M).

*Summary of rigs employed in the North Sea. The positions given are in WGS 84. Rigs are protected by a 500 m (0,27 M) safety zone.
Only the largest scale chart (Dutch) is quoted.*

N Nieuw / *New*
V Verwijderd / *Deleted*
G Gewijzigd / *Changed*

	Naam Name	Positie Position	
	Noble Linda Bossler	52-11,47 N	004-08,16 E
	Ensco 80	53-05,70 N	001-31,00 E
V	Noble Hans Deul	53-29,52 N	005-46,43 E
	GSF Labrador	54-02,10 N	000-27,40 E
V	Noble Ronald Hope	54-10,00 N	003-06,20 E
	Noble Byron Welliver	54-21,46 N	006-01-42 E
	Ensco 72	54-34,30 N	000-30,90 E
	Maersk Giant	56-22,90 N	004-14,20 E
	Ocean Princess	56-34,80 N	002-30,40 E
	GSF Galaxy 2	56-45,20 N	000-39,60 E
	Rowan Gorilla 6	56-54,90 N	002-24,00 E
	Rowan Gorilla 5	56-57,60 N	001-48,40 E
	Sedco 711	57-10,20 N	002-15,60 E
	Ensco 101	57-11,10 N	001-54,80 E
G	Noble Ton van Langeveld.	57-28,00 N	000-18,40 E
N	Paul B Lloyd JNR	57-43,90 N	003-35,80 E
G	Ocean Nomad	57-58,30 N	001-51,70 E
	Stena Spey	58-01,60 N	001-06,60 E
	Byford Dolphin	58-14,30 N	001-34,30 E
	Sedco 704	58-25,20 N	000-32,90 W
	West Epsilon	58-25,40 N	001-43,40 E
	JW McLean	58-45,80 N	001-13,00 E
	Bredford Dolphin	58-52,40 N	002-15,70 E
	West Phoenix	59-09,70 N	001-36,90 E
	Transocean Winner	59-12,80 N	002-07,70 E
	GSF Arctic 3	59-31,90 N	001-24,40 E
	Songa Dee	59-35,20 N	002-05,20 E

Bron /Source: Navarea: 1 t/m 54 WZ t/m : 309

Meetinstrumenten lijst / Measuring instruments list

17-03-2011

Overzicht van tijdelijke meetinstrumenten in het Nederlands zeegebied, binnenwateren en aangrenzend buitenlands gebied. Scheepvaart wordt verzocht niet te vissen noch te ankeren in de nabijheid van deze posities en op ruime afstand te passeren. Alleen de meest grootschalige kaart wordt genoemd.

Summary of temporary measuring instruments in the Netherlands sea area, inland waters and adjacent foreign waters. Shipping is requested not to fish nor anchor near these positions and to give a wide berth. Only the largest scale chart is quoted.

N Nieuw / New

V Verwijderd / Deleted

G Gewijzigd / Changed

	Naam Name	Vaarwater Waters	Licht Light	Positie Position		Kaart Chart	1800 Serie 1800 Serie	
	MT-1	Oostende	Fl.Y.3s	51-14,86 N	002-55,63 E		1801.2	1801.3
		Haven Zeebrugge	Fl(5)Y.20s	51-21,34 N	003-11,57 E	116	1801.3	
	32	Zeebrugge	Fl(5)Y.20s	51-21,41 N	003-10,27 E	116	1801.3B	
	HD 29	Zeebrugge	Fl(5)Y.20s	51-21,46 N	003-10,24 E	116	1801.3B	
	A962	Wielingenpas	Fl(5)Y.20s	51-21,49 N	003-07,19 E	116	1801.3	
	PVT	Terneuzen	Fl(5)Y.20s	51-21,49 N	003-44,70 E	120	1803.3	
	A962	Westerschelde	Unlit	51-21,52 N	003-07,13 E	116	1801.3	
	12	Westerschelde	Fl(5)Y.20s	51-21,59 N	003-07,19 E	116	1801.3	
		Westerschelde	Fl(5)Y.20s	51-21,66 N	003-06,89 E	116	1801.3	
	OVVA	Valkenisse	Fl(5)Y.20s	51-22,24 N	004-08,21 E	116	1801.3	
	OVHW	Hansweert	Fl(5)Y.20s	51-22,52 N	003-55,05 E	120	1803.3	
	VH1	Westerschelde	Fl.Y.5s	51-22,58 N	003-10,94 E	116	1801.3	
		Westhinder	Fl(5)Y.20s	51-23,33 N	002-26,90 E	1630		
	HNTE	Honte	Fl(5)Y.20s	51-26,50 N	003-41,18 E	120G	1801.4	1803.2
	MP-ADCP	Sardijngemaal	Fl(5)Y.20s	51-26,83 N	003-33,50 E	116/120		
	MP-VLBV	Sardijngemaal	Fl(5)Y.20s	51-26,80 N	003-33,46 E	116/120		
V	E3FAB	Westerschelde	Fl(5)Y.20s	51-37,08 N	002-53,39 E	1630		
V	E2FAB	Westerschelde	Fl(5)Y.20s	51-37,24 N	002-53,78 E	1630		
	SCHB	Schouwenbank	Fl(5)Y.20s	51-44,60 N	003-18,40 E	110	1801.5	
	SCB 2	Schouwenbank	Fl(5)Y.20s	51-44,63 N	003-18,37 E	110	1801.5	
		Noordhinder	Fl(5)Y.20s	51-44,75 N	002-29,55 E	110	1801.5	1801.6
		Noordhinder	Fl(5)Y.20s	51-44,75 N	002-29,35 E	110	1801.5	1801.6
		Lowestoft	Unlit	52-08,57 N	002-30,29 E	1630		
		Lowestoft	Fl(5)Y.20s	52-18,32 N	002-28,30 E	1630		
		Lowestoft	Unlit	52-18,64 N	002-27,58 E	1630		
	Meet IJM	IJmuiden	VQ(9)10s	52-28,09 N	004-32,33 E	124A	1801.8	1801.9
		Lowestoft	Fl(5)Y.20s	52-45,79 N	002-58,04 E	1631		
	MZW 1	Malzwin	Fl(5)Y.20s	52-59,67 N	004-57,28 E		1811.3	
	BRZ 1	Breezanddijk	Fl(5)Y.20s	53-00,80 N	005-11,31 E		1810.4	1811.3
	KWZ 1	Doove Balg	Fl(5)Y.20s	53-03,96 N	005-17,16 E		1811.3	
	BRS 1	Binnen Breesem	Fl(5)Y.20s	53-06,96 N	005-02,53 E		1811.7	
	PNG 1	Blauwe Slenk	Fl(5)Y.20s	53-14,61 N	005-11,49 E	1456	1811.4	1811.9
	AZB 61	Waddenzee	Fl(5)Y.20s	53-19,15 N	005-34,57 E	1633	1811.6	
	STMO 1	Stortemelk	Fl(5)Y.20s	53-19,28 N	005-06,13 E	1456	1811.4	1811.5E
	STM 1	Stortemelk	Fl(5)Y.20s	53-19,37 N	004-59,73 E	1456	1811.4	
	BVWZ 1	Bocht van Watum	Fl(5)Y.20s	53-19,32 N	006-59,13 E	1555	1812.7	

	Naam Name	Vaarwater Waters	Licht Light	Positie Position		Kaart Chart	1800 Serie 1800 Serie
	AZB 51	Waddenzee	FI(5)Y.20s	53-21,28 N	005-34,95 E	1353	1811.6
	AZB 62	Waddenzee	FI(5)Y.20s	53-22,39 N	005-46,16 E	1458	1812.2
	AZB 41	Oosterom	FI(5)Y.20s	53-23,44 N	005-35,68 E	1458	1811.6
	AZB 52	Waddenzee	FI(5)Y.20s	53-23,49 N	005-41,80 E	1458	1811.6 1812.2
	WRW 1	Wierummerwad	FI(5)Y.20s	53-24,46 N	006-03,83 E	1458	1812.3
	BVWN 1	Bocht van Watum	FI(5)Y.20s	53-24,52 N	006-53,01 E	1555	1812.7
	AZB 42	Ameland	FI(5)Y.20s	53-25,46 N	005-38,19 E	1458	1811.6 1812.2
	AZB 31	Ameland	FI(5)Y.20s	53-26,93 N	005-35,37 E	1458	1811.6
	AZB 32	Ameland	FI(5)Y.20s	53-27,02 N	005-36,34 E	1458	1811.6
	PWB 1	Pieterburenwad	FI(5)Y.20s	53-27,42 N	006-27,18 E	1460	1812.5
	AZB 22	Bornrif	FI(5)Y.20s	53-29,09 N	005-37,42 E	1458	1811.6
	AZB 21	Bornrif	FI(5)Y.20s	53-29,09 N	005-34,35 E	1458	1811.6
	OWEZ	Oude Westereems	FI(5)Y.20s	53-29,29 N	006-43,57 E	1460	1812.6
		Emshorn	FI.Y.4s	53-30,32 N	006-52,92 E	1460	1812.6
		Emshorn	Unlit	53-30,37 N	006-53,00 E	1460	1812.6
		Eems	Unlit	53-30,38 N	006-53,15 E	1460	1812.6
	OWEN	Oude Westereems	FI(5)Y.20s	53-30,82 N	006-40,62 E	1460	1812.6
	AZB 11	Bornrif	FI(5)Y.20s	53-31,85 N	005-28,64 E	1458	1811.10
	AZB 12	Bornrif	FI(5)Y.20s	53-32,51 N	005-39,57 E	1458	1811.10
	RZGN 1	Randzelgat	FI(5)Y.20s	53-34,25 N	006-37,94 E	1460	1812.6 1812.9
	Meet	Westereems	FI(5)Y.20s	53-34,31 N	006-37,95 E	1460	1812.6 1812.9
		Borkum Zuid	FI.Y.4s	53-34,62 N	006-39,64 E	1460	1812.6
	WEW 1	Westereems	FI(5)Y.20s	53-37,20 N	006-22,12 E	1460	1812.9
	WEO 1	Westereems	FI(5)Y.20s	53-37,22 N	006-31,31 E	1460	1812.9
	A	Norderney	FI.Y.4s	53-43,63 N	007-13,65 E	1353	1812.1
	B	Norderney	FI.Y.4s	53-43,97 N	007-13,65 E	1353	1812.1
	Meet B	Borkum Noord	FI(5)Y.20s	53-44,15 N	006-37,17 E	1353	1812.9
	C	Norderney	FI.Y.4s	53-44,72 N	007-13,65 E	1353	1812.9
G	BRKN1	Noordzee	FI(5)Y.20s	53-45,08 N	006-37,42 E	1353	1812.9
		Borkum Noord	FI(5)Y.20s	53-45,12 N	006-37,31 E	1353	1812.9
	Ness	Molengat	FI(5)Y.20s	53-25,79 N	005-45,53 E		1812.2A
	NAM 14	Western Mud Hole	FI(5)Y.20s	53-33,03 N	003-28,50 E	1632	
	BG 1	Western Mud Hole	FI(5)Y.20s	53-53,10 N	003-28,29 E	1632	
		Ems	FI.Y.4s	53-19,84 N	007-08,68 E	1555	1812.8
		Ems	FI.Y.4s	53-19,62 N	007-14,42 E	1555	1812.8

Behoort bij BaZ nr. 116/11 *Belongs to NL NtM 116/11*

BaZ nr. 116/11 vervangt BaZ nr. 503/10 *NL NtM 116/11 replaces NL NtM 503/10*

Add section 14.4.1.5:

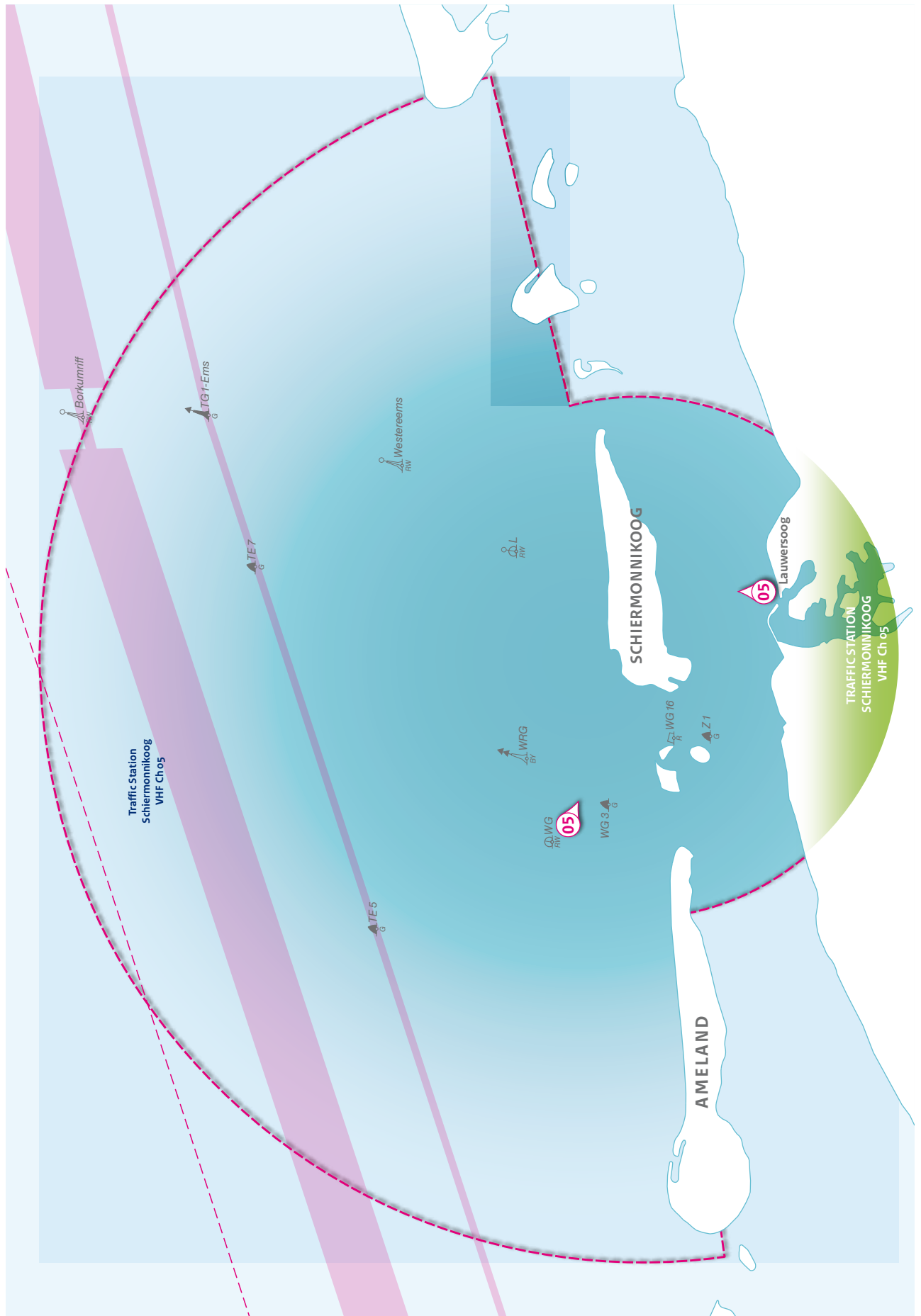
14.4.1.5 **ETA**

Who	<ul style="list-style-type: none">■ All vessels carrying dangerous cargo;■ Special transports;■ Vessels restricted in their manoeuvrability.
To	Centrale Meldpost Waddenzee Telephone: +31 (0)562 443 100 Fax: +31 (0)562 442 355 VHF Ch 04
What	Name vessel - call sign - nationality- type of vessel and GT - loa - width - draught - Lloyds number - harbour of destination - ETA - sailing plan - cargo specifications - confirmation 'Bill of loading' on board - number of crew/passengers on board.
When	<ul style="list-style-type: none">■ ETA - 24h entering Waddenzee;■ Unexpected circumstances within VHF - range.

Behoort bij BaZ nr. 116/11 *Belongs to NL NtM 116/11*

BaZ nr. 116/11 vervangt BaZ nr. 503/10 *NL NtM 116/11 replaces NL NtM 503/10*

Delete chapter 14.4.4 and replace by:



Behoort bij BaZ nr. 116/11 *Belongs to NL NtM 116/11*

BaZ nr. 116/11 vervangt BaZ nr. 503/10 *NL NtM 116/11 replaces NL NtM 503/10*

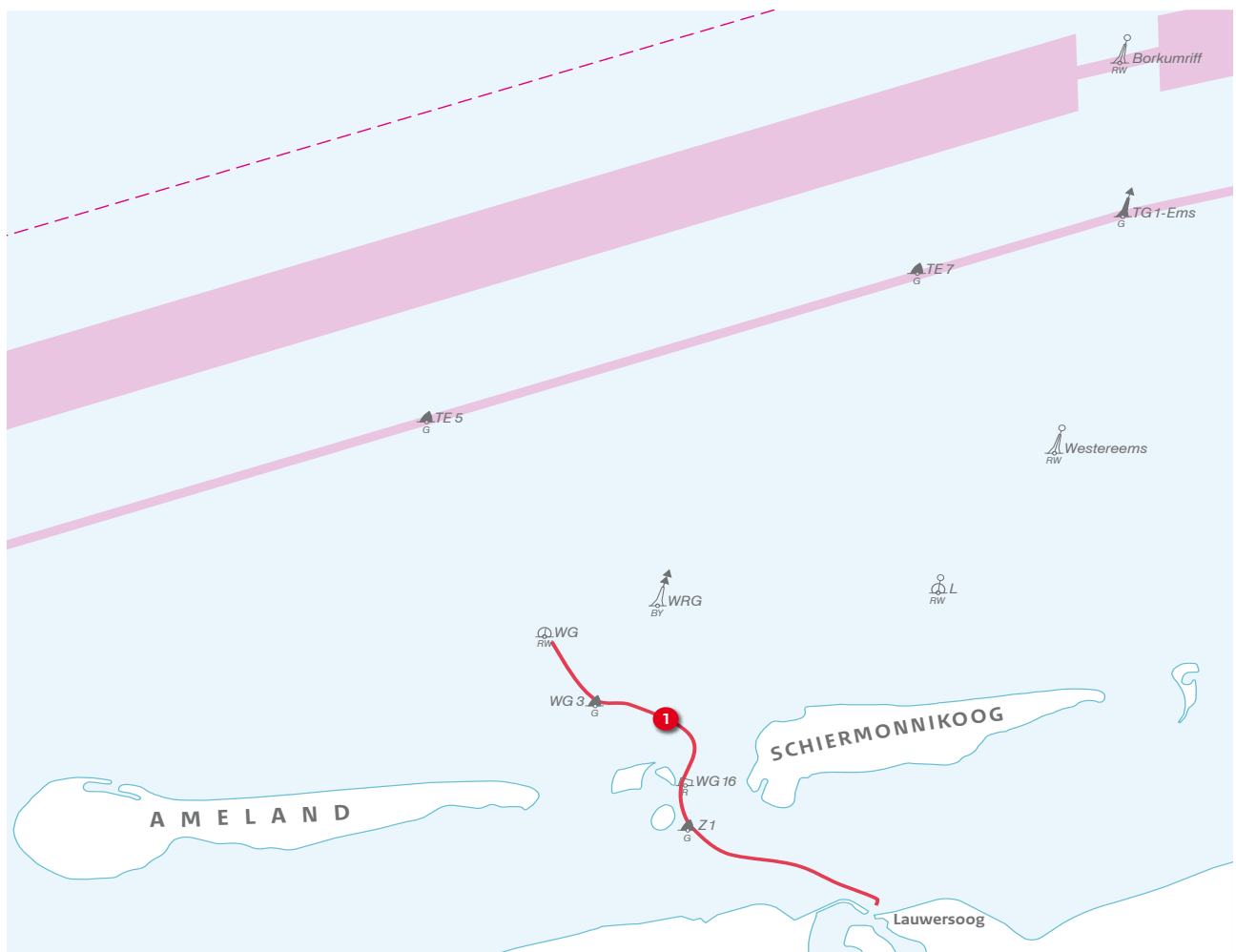
VTS-reports - All vessels except vessels < 20m (not carrying dangerous cargo)

VHF Ch	Location	Message	To
05	<ul style="list-style-type: none"> ■ On time before entering Waddenzee; ■ When leaving/entering a harbour or secondary fairway; ■ When turning in or crossing the fairway; ■ When dropping or heaving anchor. 	<ul style="list-style-type: none"> ■ Name vessel and call sign; ■ Position; ■ Destination; ■ Draught; ■ Cargo; ■ Number of crew/passengers. 	Traffic Station Schiermonnikoog

Other communication

VHF Ch	Location	Service	Call sign
05	Lighthouse Schiermonnikoog	<p>Traffic Station Schiermonnikoog provides radar information on request. This means that the vessel's position relative to bouys or other recognisable points is passed.</p> <p>No information is provided about shipping in the vicinity. Navigational information regarding the eastern part of the Waddenzee is transmitted at the following fixed times (Lt): 00h30, 02h30, 04h30, 06h30, 08h30, 10h30, 12h30, 14h30, 16h30, 18h30, 20h30 and 22h30.</p>	Traffic Station Schiermonnikoog
04		The Central Reporting Station Waddenzee is responsible for co-ordinating the relevant maritime authorities with regard to all incidents within the Waddenzee area.	Central Reporting Station Waddenzee
11	Lauwersoog Harbour	The station is occupied: Mon. 0000 - 1700; Tue. and Wed. from 0800 - 0700; Thu. and Sat. from 0700 - 1500 (Lt)	Port Authority Lauwersoog

Delete chapter 14.6.1 and replace by:



Delete chapter 14.6.1.2 and replace by:

14.6.1.2

Note

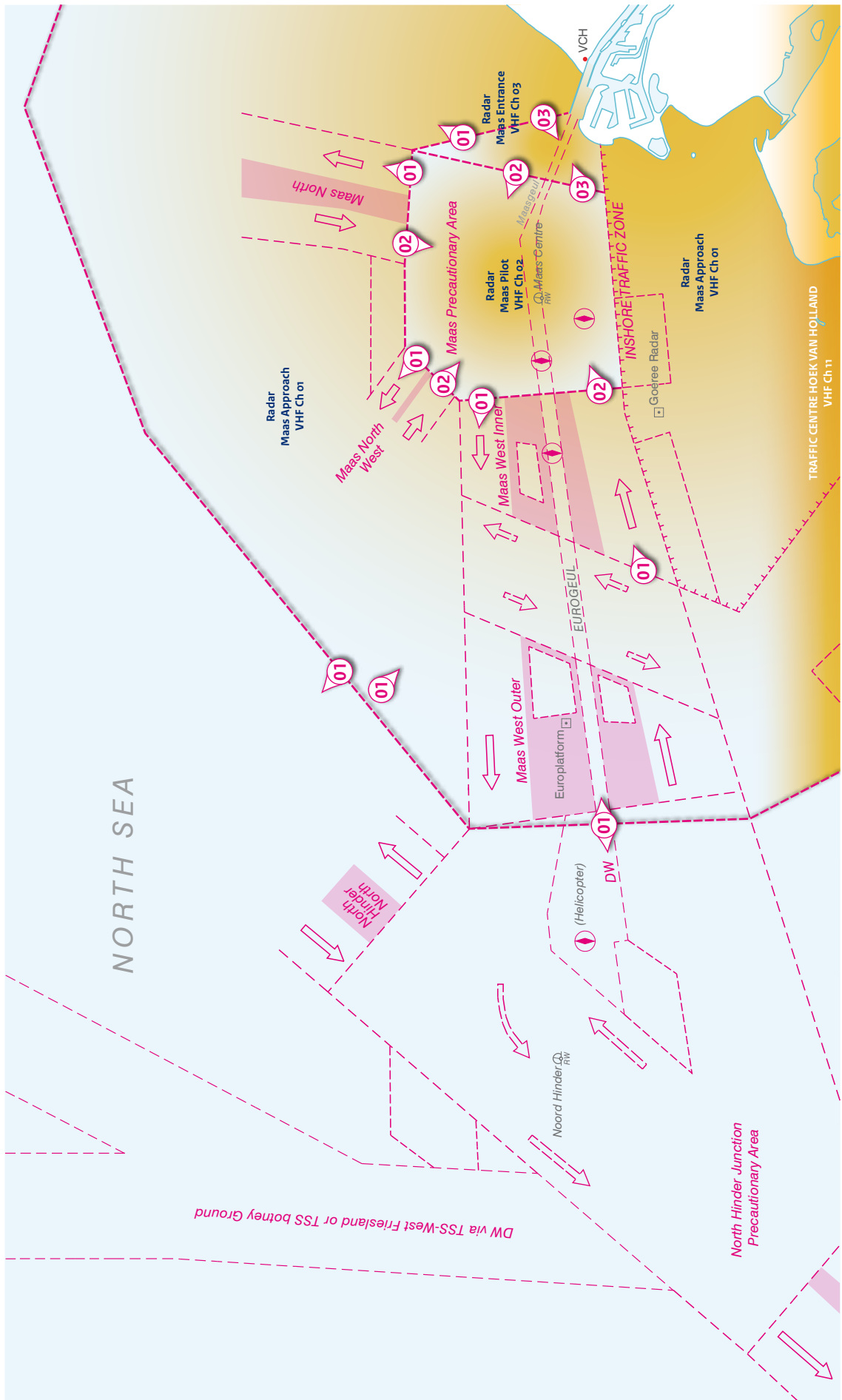
Over Gronden van het Plaatgat, Wierumer Gronden and the buoyed channel Westgat ground seas and/or heavy seas can arise during winds > 7 Bft. from WNW-ly to NEly directions especially when the wind runs against the falling tide (stream setting NW-N). For small vessels it is advised against to navigate the channel during above mentioned circumstances. Sailing Westgat can best be done via Lt buoy 'WG' from 2h before HW Lauwersoog to HW Lauwersoog (HW at the Fairway Buoys = approximately HW Lauwersoog - oohzom). The Traffic Station at Schiermonnikoog will inform shipping about wind and sea state on request. See section 14.4.4 'Vessel traffic services'.

Delete chapter 14.6.1.3

Delete chapter 14.7.2: Tidal streams table 'Plaatgat' (53° 30.1' N 06° 07.3' E)

Behoort bij BaZ nr. 117/11 *Belongs to* NL NtM 117/11

Delete chart 9.4.4 and replace by:



Delete chapter 9.5.1.4 and replace by:

9.5.1.4

Pilot vessel cruising stations'

Boarding/unboarding station for vessels with draught up to 14.29m

- Embarkation of the pilot will take place by small or large tender 2 n miles west southwest of Maas Center Lt buoy, 1 pilot boarding;
- Disembarkation of the pilot will take place at the position of the MO Lt buoy;
- Vessels bound for Stellendam (Goereese Sluis) and Scheveningen may also embark the pilot here.

Boarding/unboarding station for vessels with draught between 14.30m and 17.39m

- Embarkation will take place by small or large tender, west of the E13 Lt buoy, in the Eurogeul, exact position will be advised via VTS, 1 pilot boarding;
- Disembarkation of the pilot will take place after passing of the MO Lt buoy.

Boarding/unboarding station for LNG-carriers

- Embarkation will take place by small or large tender in the Eurogeul between the E9 and E11 Lt buoys;
- Disembarkation of the pilot will take place near the MNW3-MW6 Lt buoy.

Unboarding station for vessels with a draught between 17.40m and 20.75m

- Disembarkation of the pilot will take place at the Euro Lt buoy.

How to recognize the pilot cutter, tenders, swath

- Pilot cutter: Located one mile south of the Maas Center Lt buoy: black vessel with yellow and white superstructure, with the word 'Pilot' in white letters on either side;
- Small tender: Yellow open tender surrounded by a black fender;
- Large tender: Yellow tender with a white superstructure, with the word 'Pilot' in black letters on either side;
- SWATH: Twin hull yellow tender with a white superstructure, with the word 'Pilot' in black letters on either side.

How to prepare the vessel for boarding the pilot

- By tender: Vessels with a freeboard of over 9.0m must provide an accommodation ladder in addition to the pilot ladder. Generally, pilots refuse to use mechanical pilot hoists or other constructions that do not comply with the above-mentioned regulations;
- By small tender: Pilot ladder 2 ft above the water, speed 4 kn;
- By large tender: Pilot ladder 6 ft above the water, speed 5-6 kn;
- By swath: Pilot ladder to be adjusted according instructions, speed 8-10 kn.

Add to chapter 9.6.1.1

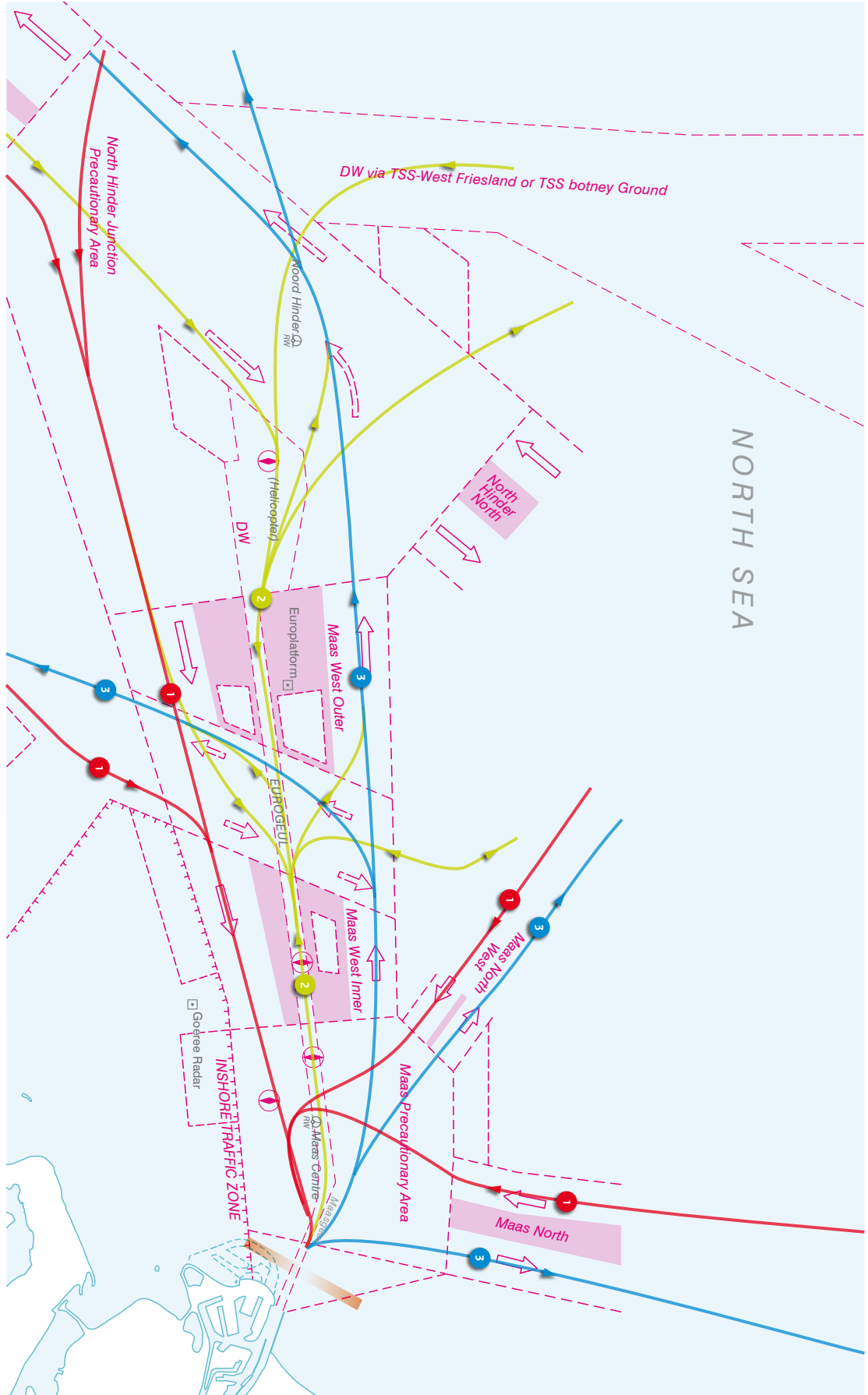
9.6.1.1

Inbound LNG-carriers

- These vessels do not receive a Plan of Entry, and can enter at any time (except in case of tidal windows);
- LNG-carriers must embark the pilot in the Eurogeul between the E9 and E11 Lt buoys;
- LNG-carriers follow the TSS Maas West Outer and enter Eurogeul between E5 and E7 Lt buoy;
- Keep the pilot cutter on the lee side unless advised otherwise;
- When entering the outer breakwaters of Hoek van Holland tidal cross stream should be reckoned with. During maximum tidal stream a minimum speed of 10 kn is advised in order to make course corrections.

Delete chart 9.6.1 and replace by:

9.6.1 **Zeegat van Hoek van Holland approach**



Delete chapter 10.4.2 and replace by:

- 10.4.2 Request for a pilot**
 Pilotage is ad hoc compulsory to enter Scheveningen Harbour. If needed the pilot can be ordered at Maas Pilot (see Chapter 9- Zeegat van Hoek van Holland, section 9.4.2 'Request for a Pilot').

Delete chapter 10.6.1 - '2 Approaching from a northerly direction' and replace by:

- 10.6.1 2 Approaching from a northerly direction**
 Scheveningen can be reached from several N-ly directions.
 Pilotage is not compulsory to enter Scheveningen Harbour but if needed the pilot will board at the pilot station approximate 2 n miles SW of Maas Centre Lt buoy.


Delete chapter 10.6.2 and replace by:

- 10.6.2 Anchorages**
Anchorage E of Lt buoy 'SCH'.
 No particular information available.
 Vessels should report their intentions to anchor in this area to Traffic Centre Scheveningen. Maximum stay 24h (dispensation is possible).

Delete chapter 10.9.2; 'The tide signals are traffic station' and replace by:

- 10.9.2 Tide signals**
 The tide signals are displayed from a signal mast near the traffic station and are only visible for inbound traffic.

Delete chapter 10.10.1 and replace by:

10.10.1 Scheveningen	
Facilities	
Cargo	Fish, Ro-Ro, passengers
Bunker	Fuel, Lubricating oil, Potable water
Repairing	Two slipways with lifting capacity of 1100 tons for vessels up to 60m in length and beam of 9.5m
Port reception	Oil waste, Garbage and Chemicals
Mooring	Tugboats and boatmen available
Restrictions	<ul style="list-style-type: none"> ■ Maximum speed 7 km/h; ■ 1e Haven: Maximum LOA 160m and draught 75dm; ■ 2e Haven: Maximum LOA 80m and draught 40 dm; ■ 3e Haven: Maximum LOA 145m; ■ Vessels coming from 1e Haven have right of way over vessels coming from 2e Haven; ■ Incoming vessels 2e Haven have right of way over outgoing vessels 2e Haven.

Behoort bij BaZ nr 120/11 *Belongs to NL NtM 120/11*

Delete Chapter 2.1.5 and replace by:

2.1.5

Communication

Contacting the Coast Guard Centre at Den Helder from the shore-side is possible in case of alerting or operational matters and can be made as follows:

Emergency telephone number: +31 (0) 900 01 11;

Operational telephone number: +31 (0) 223 54 23 00;

Fax: +31 (0)223 65 83 58;

Contact frequencies Coast Guard

Distress-, Urgent- and Safety messages North Sea, Netherlands coastal waters, Waddenzee, IJsselmeer and waters in the SW Netherlands

Frequency	Call sign
VHF Ch 16 2187,5 kHz (MF/DSC)	Netherlands Coast Guard 2442000
VHF Ch 70 (VHF/DSC)	2442000
Inmarsat C	4471088 KUSTW NL

Traffic Centres	Call sign
Schiermonnikoog VHF Ch 05 (H24)	Traffic Station Schiermonnikoog
Ouddorp VHF Ch 25 (08Hoo-20Hoo)	Traffic Station Ouddorp
Terschelling VHF Ch 02 (H24)	Traffic Station Brandaris
Den Helder VHF Ch 62 (H24)	Traffic Centre Den Helder
Ijmuiden VHF Ch 07 (H24)	Traffic Centre Ijmuiden
Scheveningen VHF Ch 21 (H24)	Traffic Centre Scheveningen
Hoek van Holland VHF Ch 11 (H24)	Traffic Centre Hoek van Holland
Vlissingen VHF Ch 64/14 (H24)	Traffic Centre Vlissingen

During search and rescue actions the call sign is 'Den Helder Rescue'