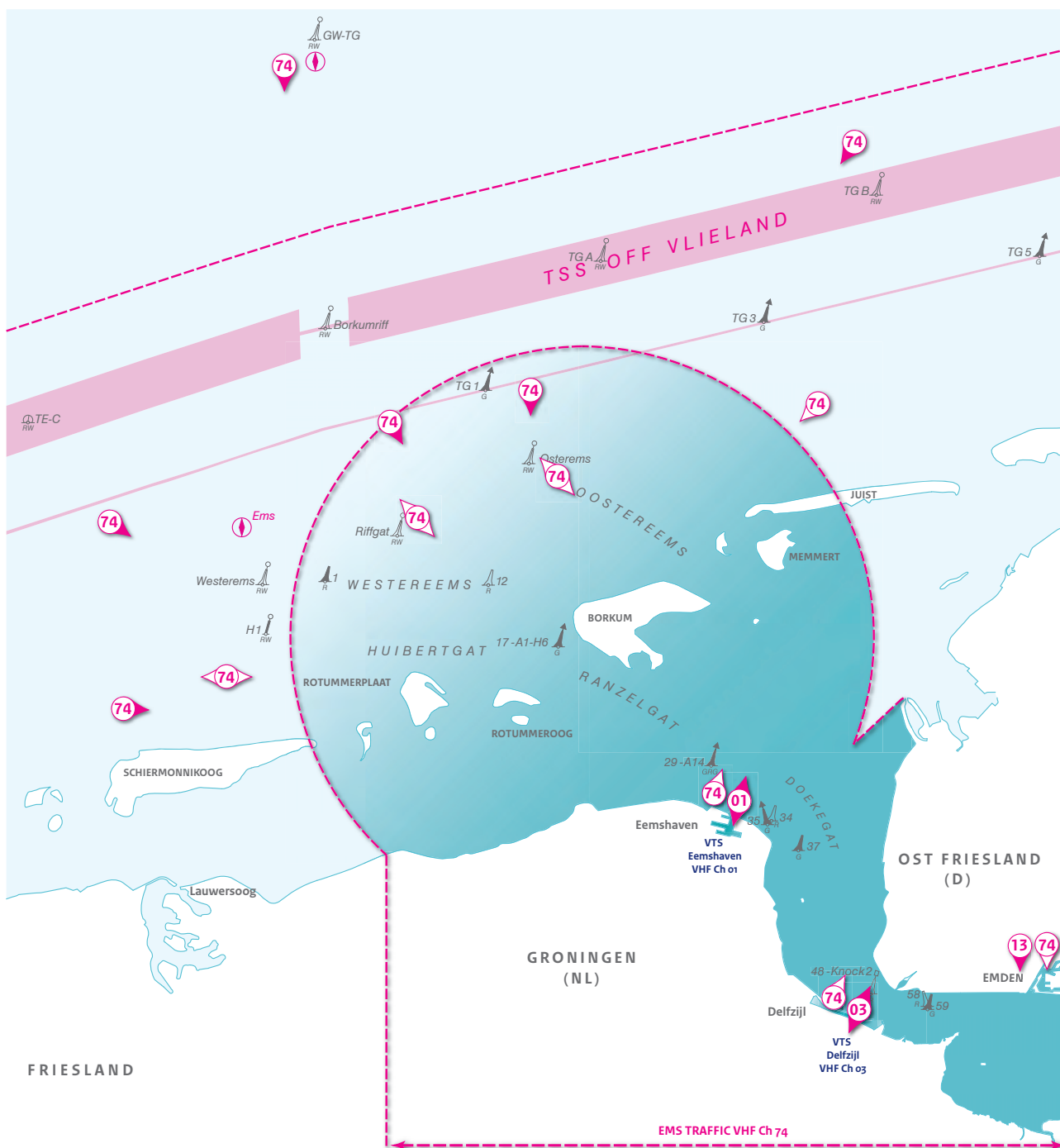


Behoort bij BaZ nr 46/20 Belongs to NL NtM 46/20

Delete Chapter 15.4.4 (illustration) and replace by:



Behoort bij BaZ nr 46/20 Belongs to NL NtM 46/20

Delete table 15.4.4.1 and replace by:

VHF Ch	Location	Message	To
74	<ul style="list-style-type: none"> ■ Before entering the Ems VTS area on the seaward side; ■ When leaving an anchorage or berth within the VTS area. 	<ul style="list-style-type: none"> ■ Name vessel and call sign; ■ Position; ■ Length, draught; ■ Port of departure, destination; 	Ems Traffic
01	<ul style="list-style-type: none"> ■ Before entering Eemshaven; ■ On departure Eemshaven. 	<ul style="list-style-type: none"> ■ Indication of liquefied gases or petroleum (products) are/where carried in bulk, and in case; type, quantity, UN number and if tanks are not cleaned or if they are completely inerted; 	VTS Eemshaven
03	<ul style="list-style-type: none"> ■ Before entering Delfzijl harbour; ■ On departure Delfzijl harbour. 	<ul style="list-style-type: none"> ■ Indication of deficiencies, restrictions of manoeuvrability; 	VTS Delfzijl
13	Before leaving Emden harbour.	<ul style="list-style-type: none"> ■ Name of vessel's owner or the latter's agents. 	Emden Radar

Behoort bij BaZ nr 46/20 Belongs to NL NtM 46/20

Delete table 15.4.4.2 and replace by:

VHF Ch	Location	Message	To
74	<ul style="list-style-type: none"> ■ Near fairway buoys Westerems, Riffgat and Osterems (incoming/outgoing); ■ Eemshaven (outgoing); ■ When passing buoy 35 (SE-bound); ■ Delfzijl (outgoing); ■ Emden (incoming/outgoing); ■ When leaving an anchorage, berth or lock within the VTS area. 	<ul style="list-style-type: none"> ■ Name vessel and call sign; ■ Position; ■ Time of report (LT in 4 digits); ■ Speed. 	Ems Traffic

Behoort bij BaZ nr 46/20 Belongs to NL NtM 46/20

Delete table 15.4.4.3 and replace by:

VHF Ch	Station	Service
74	EMS Traffic	<p>Listening watch All seagoing vessels entering the VTS Area must maintain a continuous listening watch on the local VHF Channel of Ems Traffic.</p> <p>Information broadcasts Ems Traffic broadcasts every H+50. The broadcast includes the following:</p> <ul style="list-style-type: none"> ■ Information relevant to the safe passage through the VTS Area; ■ General fairway and traffic situation (e.g. local storm warnings, weather messages, visibility and ice reports when appropriate, casualties, dredging operations and pilot information).

Delete table 15.4.4.4 and replace by:

VHF Ch	Station	Service
01 03	VTS Eemshaven VTS Delfzijl	<p>Radar assistance When visibility is below 2000m within the jurisdiction of the VTS area. Under special circumstances assistance can also be given when visibility is good, for example if navigational aids are not working correctly.</p> <p>Duty to report</p> <ul style="list-style-type: none"> ■ On entering or leaving the VTS area; ■ When intending to carry out a special manoeuvre or any other action, deviating from the normal traffic pattern; ■ On completion of mooring; ■ On departure to a destination in- or outside the VTS area. <p>Reports (as stated under a. and b. are to be accompanied by the following statements:</p> <ul style="list-style-type: none"> ■ name of vessels; ■ position; ■ draught; ■ home port of destination; ■ remarks (if any). <p>Information broadcasts Weather and tidal information on request on VHF Ch. 66 (Delfzijl/Eemshaven Port Control).</p> <p>Vessel Traffic Services Delfzijl/Eemshaven The roads of and approaches to Delfzijl/Eemshaven, as well as the main fairways in the ports and adjacent harbour bassins are covered by the VTS (excluding the entrance to the sea locks Delfzijl). This system is mandatory for all seagoing vessels, except recreational craft. The VTS consists of a Vessel Traffic System and an Information System. Both facilities are located in the Harbour Co-ordination Centre (HCC) 'Eemsmonding' and serves ports of both Delfzijl and Eemshaven. The HCC is responsible for the planning and co-ordination of vessels traffic movements and has a direct line of communication with the VTS through Knock Radar.</p> <p>Delfzijl/Eemshaven Port Control - VHF Ch 66</p>